



GRAN NIKTĒ  
YUCATĀN



WELCOME

---



JOIN THE ADVENTURE  
EXPERIENCE IN SISAL, YUCATÁN

[nikteyucatan.mx](http://nikteyucatan.mx)



Discover your adventurous spirit in Gran Nikté.

- 100 HECTARES
- 3 PRIVATES
- 1 CLUB HOUSE
- 1 MACROLOTS - RESIDENTIAL LOTS
- 1 MACROLOTS -MIXED-USE AREA
- 1 COMMERCIAL AREA

 nikteyucatan.mx

2029  
4  **FLAMINGO PLAZA**  
17 COMMERCIAL LOCALS  
1,770 m<sup>2</sup>

2029  
5  **KABAH**  
RESIDENTIAL MACROLOTS  
115,756.07 m<sup>2</sup>

2028  
6  **ZAMĀ**  
PRIVATE RESIDENTIAL  
465 LOTS - 169,976.73 m<sup>2</sup>

2025  
7 **MACROLOTS**  
MIXED-USED AREA  
34,932.48 m<sup>2</sup>

2026  
3  **TUNICH**  
PRIVATE RESIDENTIAL  
747 LOTS - 340,139.88 m<sup>2</sup>

2025  
2  **AVENTURA SISAL**  
CLUB HOUSE  
20,167.54 m<sup>2</sup>

2024  
1  **KIN-HĀ**  
PRIVATE RESIDENTIAL  
593 LOTS - 268,416.23 m<sup>2</sup>







# COMPRISED OF 3 PRIVATE ROADS WITH SEPARATE HOAS

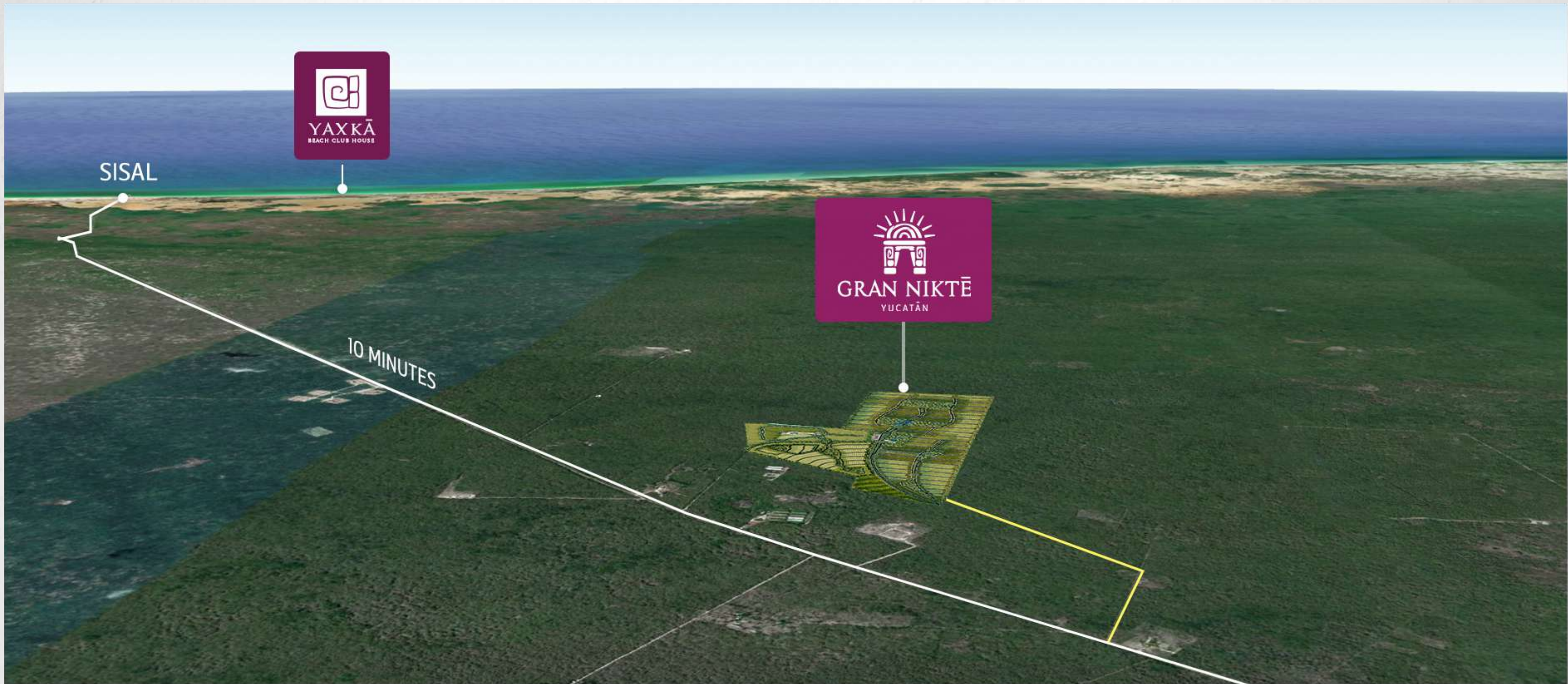
Mainly inspired by the wealth of the collection  
mayan culture and elements of nature.

[nikteyucatan.mx](http://nikteyucatan.mx)







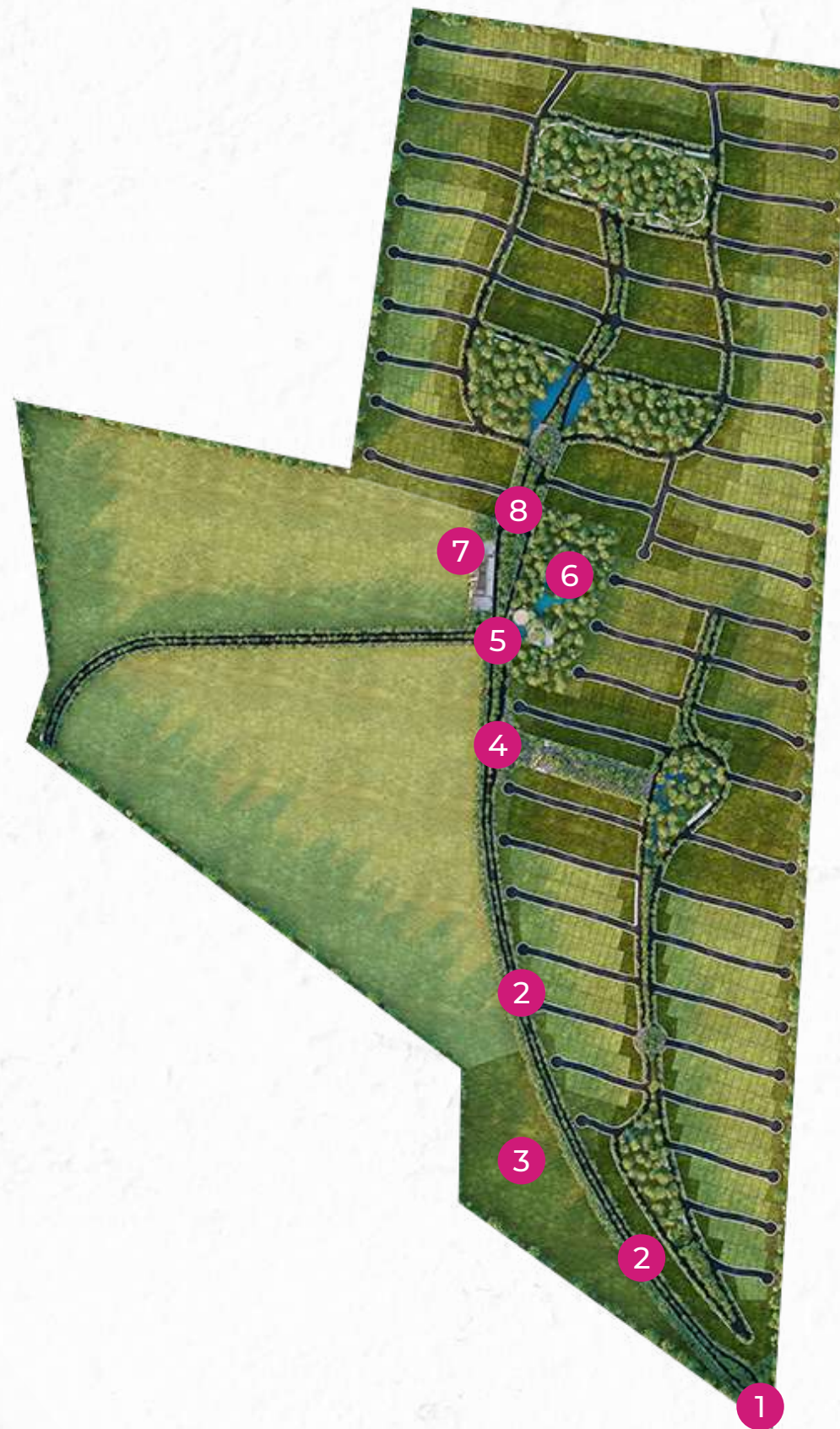


LOCATION OF GRAN NIKTĒ YUCATÁN | ACCESS TO DEVELOPMENT ON THE HUNUCMÁ - SISAL HIGHWAY



## MASTER PLAN

### MAIN AREAS



1. PRINCIPAL ACCESS
2. MAIN AVENUE WITH LIGHTING
3. MIXED-USE AREA
4. ACCESS TO PRIVATE "KIN-HÁ"
5. PRINCIPAL ROUNDABOUT
6. "AVENTURA SISAL CASA CLUB" (CLUB HOUSE)
7. COMMERCIAL AREA "FLAMINGO PLAZA"







KIN·HĀ  
PRIVATE RESIDENTIAL





KIN-HÁ - PRINCIPAL ACCESS





Build your way



593 RESIDENTIAL LOTS

-

SINCE 230 m<sup>2</sup>





MASTER PLAN  
KIN-HÁ

27 Hectares  
593 Residential lots

Principal  
Access  
"KIN-HÁ"

Relaxation  
amenity area

Recreation  
amenity area





# AMENITIES

KIN-HÁ

## Relaxation zone

1. Pond
2. Reading areas
3. Yoga-Taichi zone
4. Pavilions with grills
5. Shared services area
6. Playground
7. Swimming pool
8. Parking
9. Walking trails
10. Bridges





# AMENITIES

KIN-HÁ

## Recreation zone

1. Pond
2. Pet park
3. Picnic zone
4. Bikeway
5. Parking
6. Swimming pool
7. Fountains
8. Playground
9. Pavilions with grills (2)
10. Shared services area
11. Multipurpose court
12. Jogging circuit
13. TRX conditioning area
14. Paddle courts



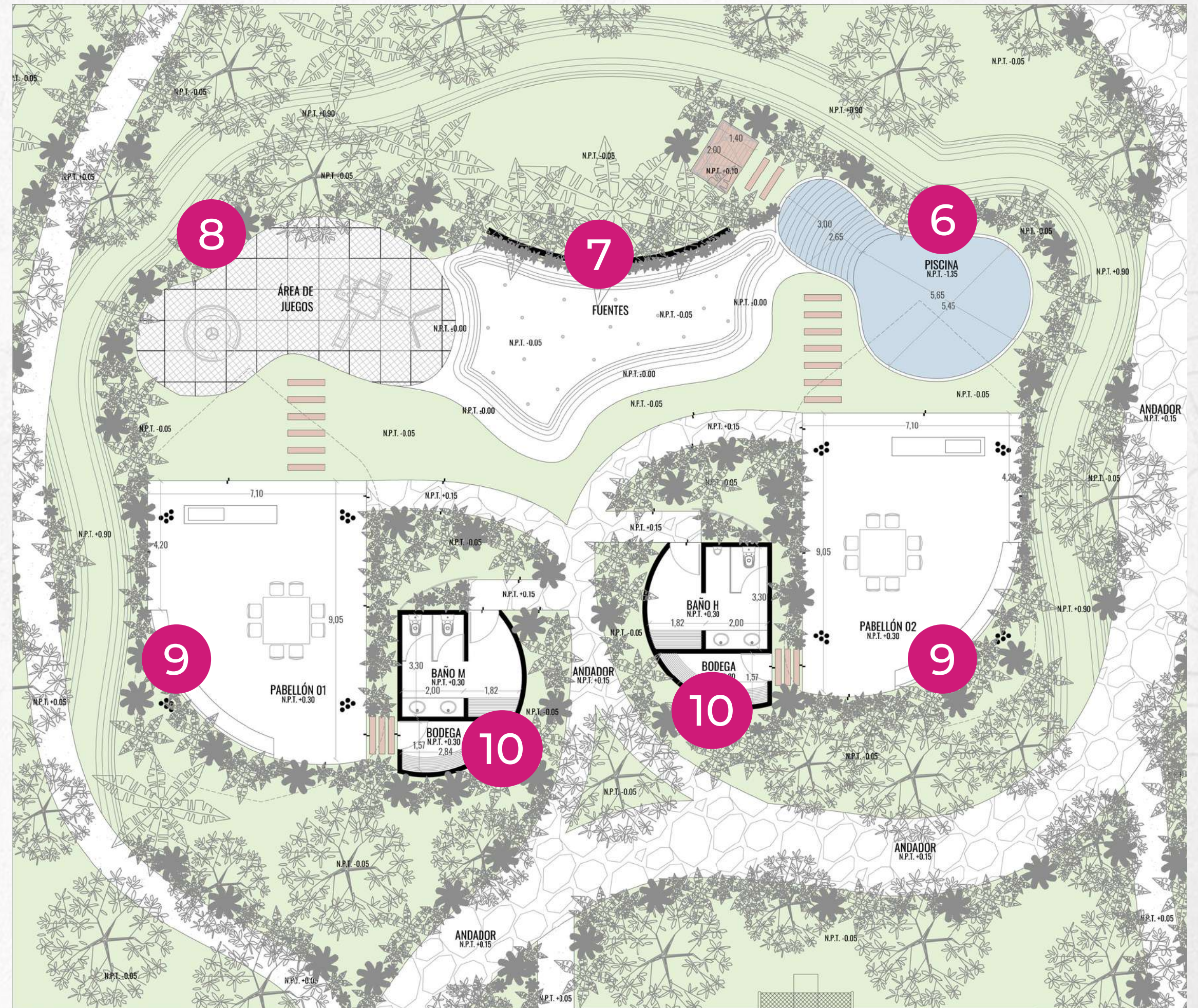


# AMENITIES

## KIN-HÁ

### Recreation zone

- 6. Swimming pool
- 7. Fountains
- 8. Playground
- 9. Pavilions with grills (2)
- 10. Shared services area

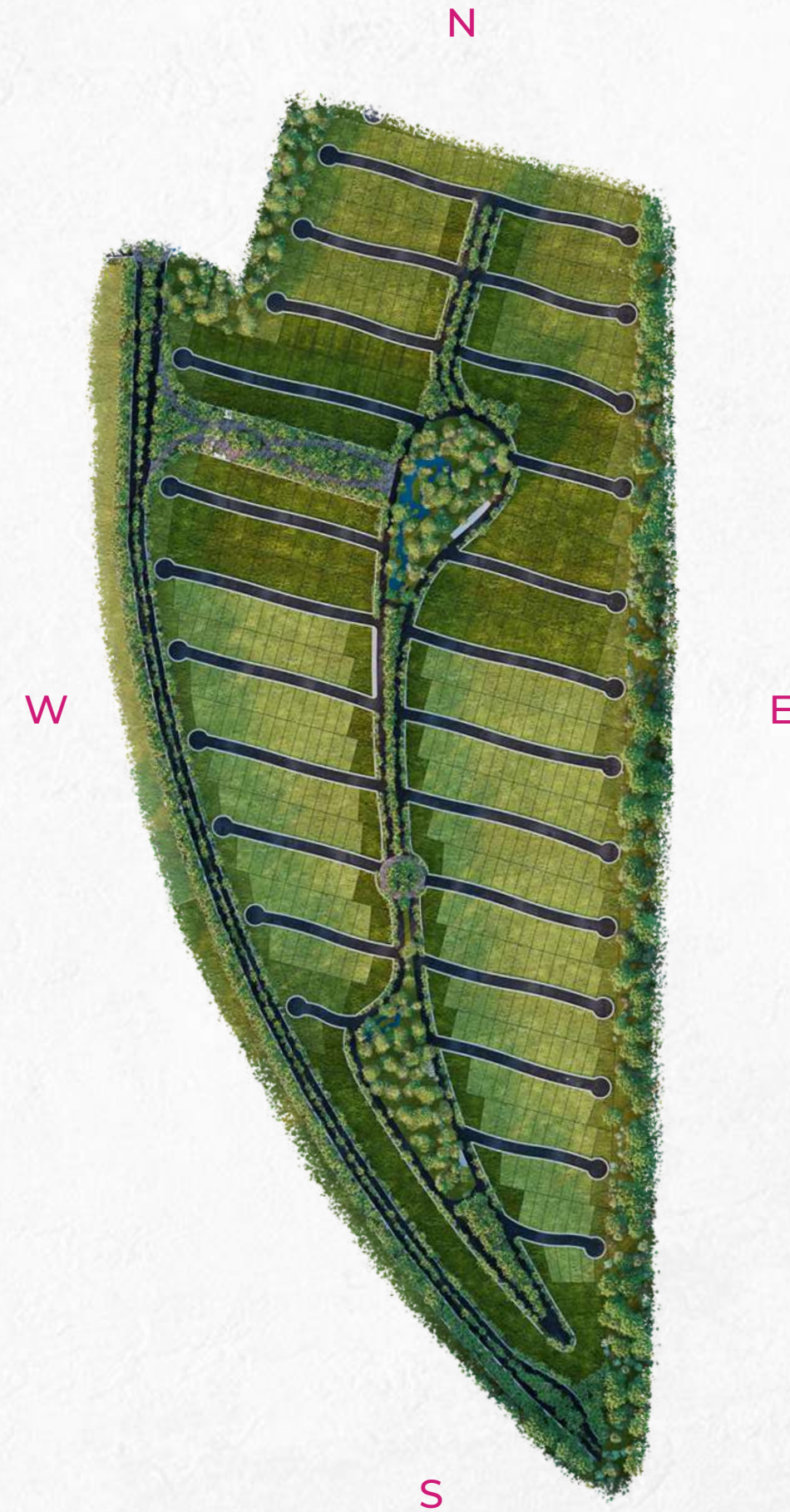




## URBANIZATION CHARACTERISTICS

### KIN-HÁ

- Perimeter fence
- Security booth
- Surveillance cameras and access control
- High voltage electric fence
- Underground infrastructure
- Paved roads
- Sidewalk
- Topographic surveys with UTM coordinates
- Street lighting
- Electricity available for each lot
- Drinking water system







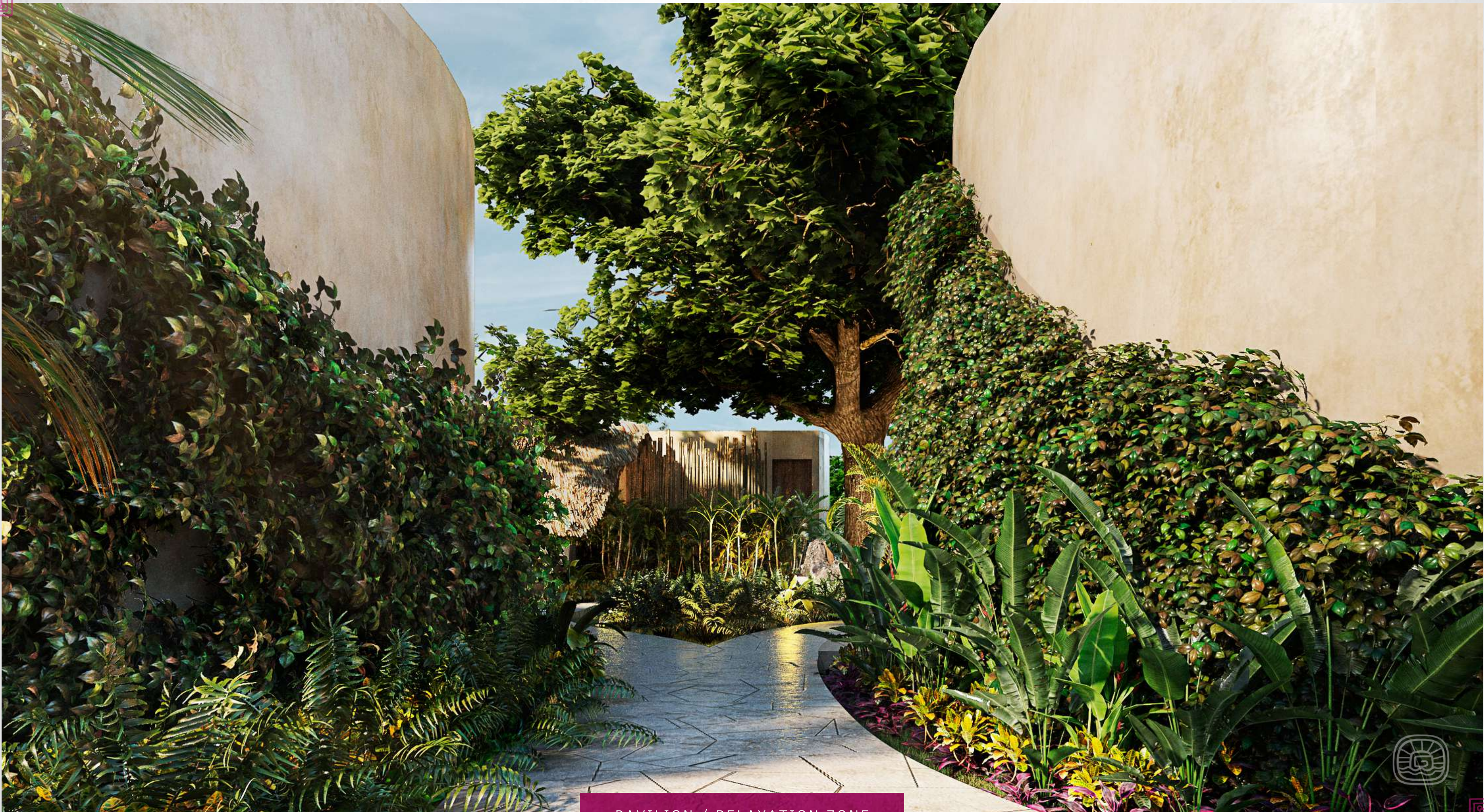
"KIN-HA" MAIN ENTRANCE







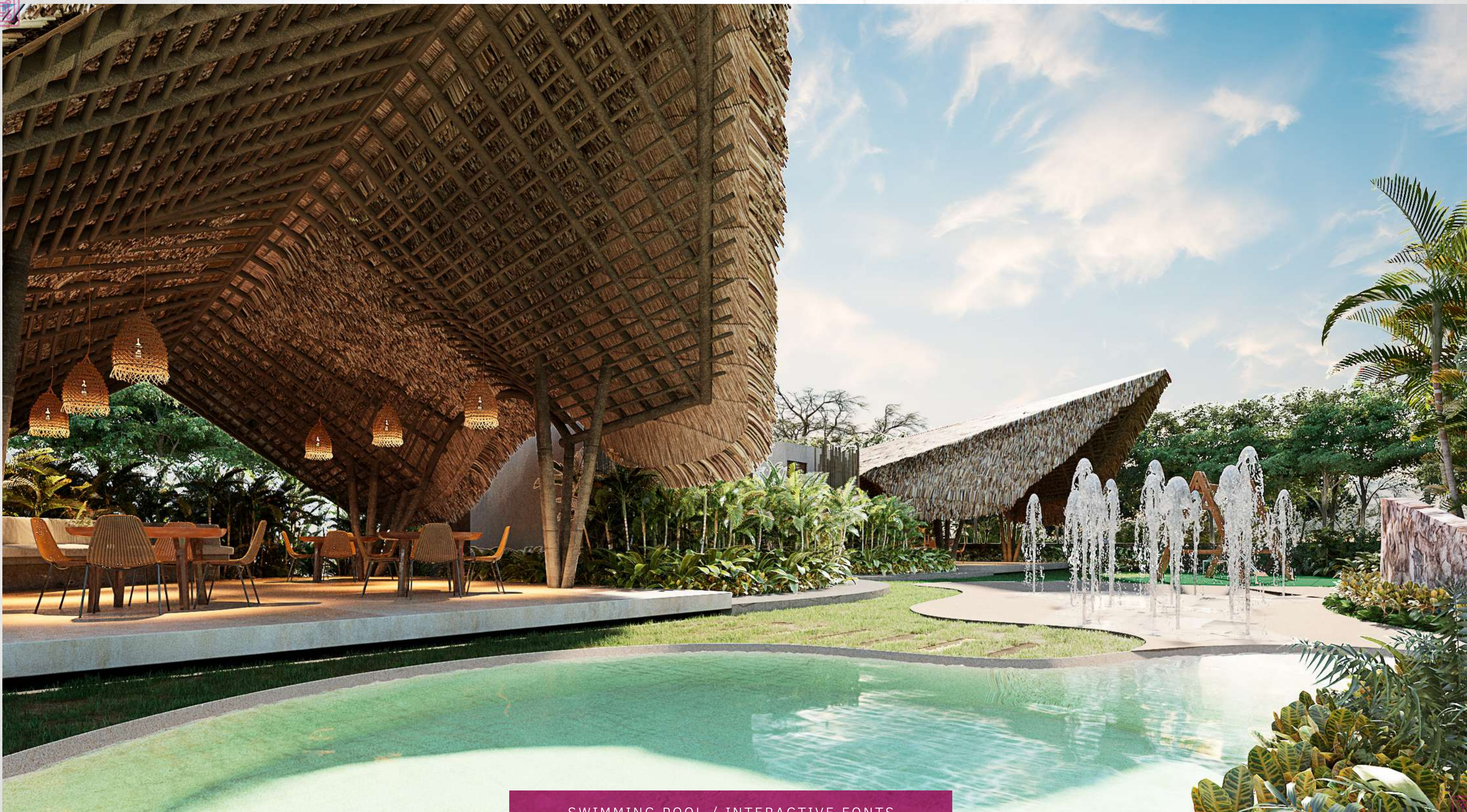




PAVILION / RELAXATION ZONE







SWIMMING POOL / INTERACTIVE FONTS







PADDEL COURT / RELAXATION ZONE







PET PARK / RELAXATION ZONE







## RESIDENTIAL LOTS

STANDARD

Dimensions since 250 m2

PLUS

With perimeter fence

PREMIUM

Located front of main amenities

\*Direct financing plans with the developer

[CLICK HERE FOR A QUOTE](#)



nikteyucatan.mx





WITH ACCESS TO:



[nikteyucatan.mx](http://nikteyucatan.mx)



DEVELOPED BY



CREATOR OF





COMERCIALIZED BY

